

# Proview Installation Guide Debian

Debian distribution: Debian Squeeze

System Requirements

Platform: x86

Kernel >= 2.6.32

## ***Package pwr48***

Dependencies

libc6 >= 2.11.1-7

libgtk2.0-0 >= 2.20.1-2

libasound2 >= 1.0.23-2.1

libdb4.8 >= 4.8.30-2

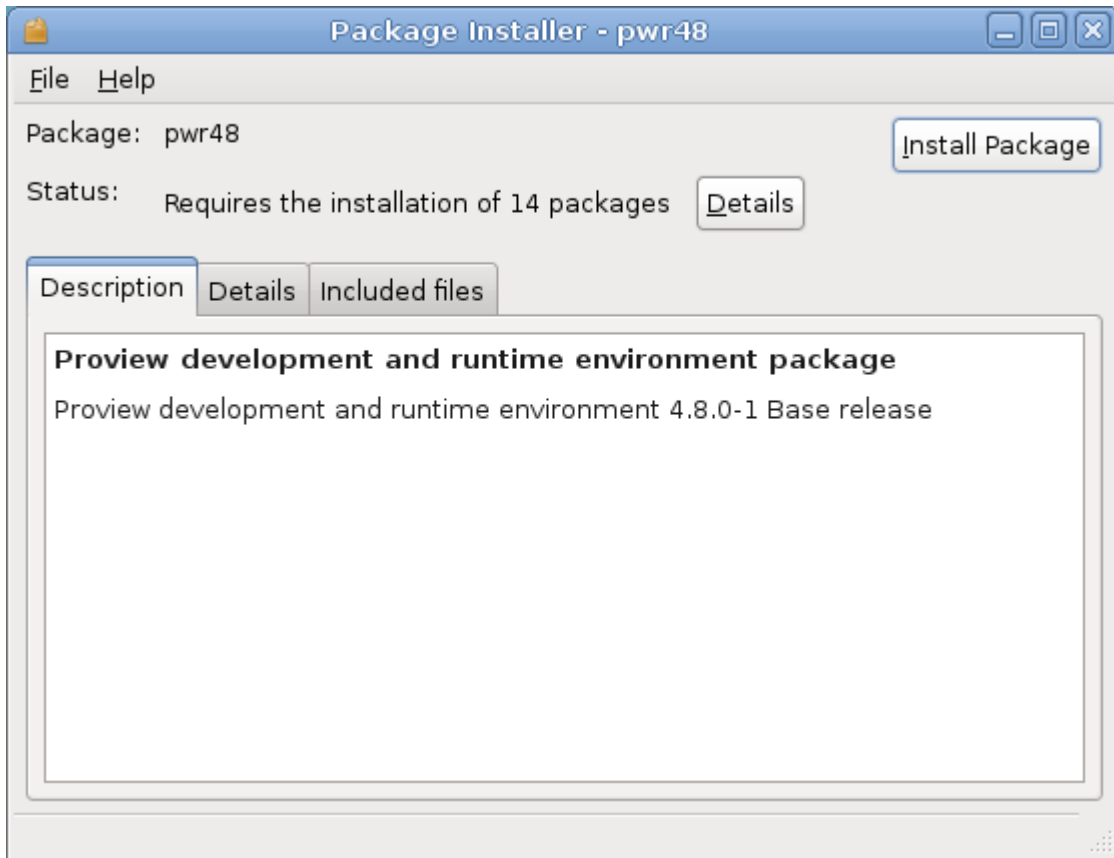
libdb4.9++ >= 4.8.30-2

libmysql++3 >= 3.0.9-1+b1

g++ >= 4:4.4.5-1

Download the pwr48 development package and save to disk. By default it is stored in the Downloads catalog.

Open the Downloads catalog, for example from Places/Downloads in the menu, and rightclick on the pwr48 package. Activate GDebi Package Installer in the popup menu.



Press the Install Package button to start the installation.

Login as user pwrp and start the Project Administrator by clicking on the Proview desktop icon.

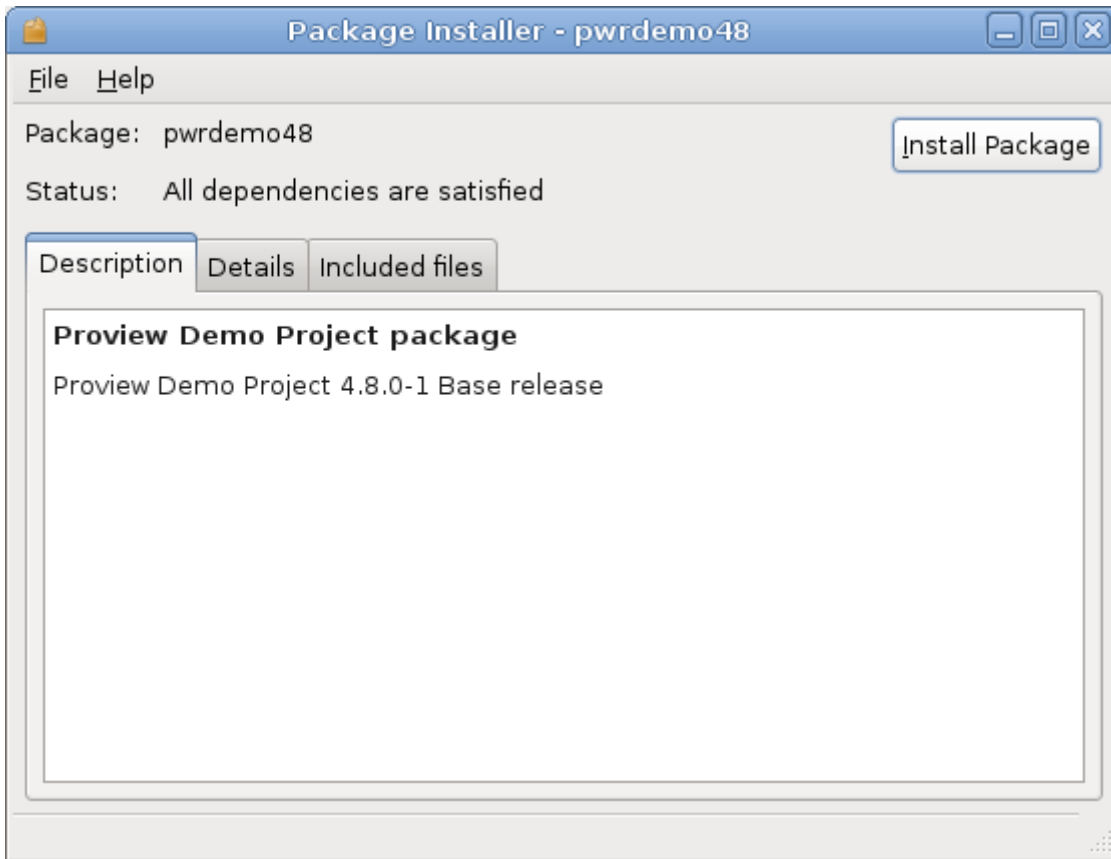
If you are new to Proview, read the Proview Getting Started Guide available at [www.proview.se](http://www.proview.se)

### ***Package pwrdemo***

The demo package installs a Proview project that contains a demo of the dynamics and components of the HMI, some application examples, a level and a temperature control, and some examples of basecomponents.

The development package pwr48 has to be installed before installing the pwrdemo package.

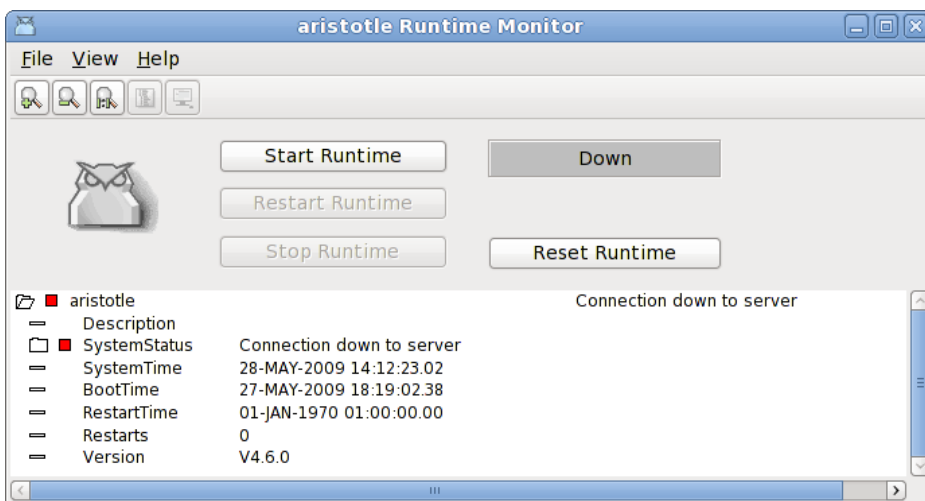
Download the debian package and open the Downloads catalog. Rightclick on the pwrdemo48 package and activate GDebi Package Installer in the popup menu.



Press the Install Package button to start the installation.

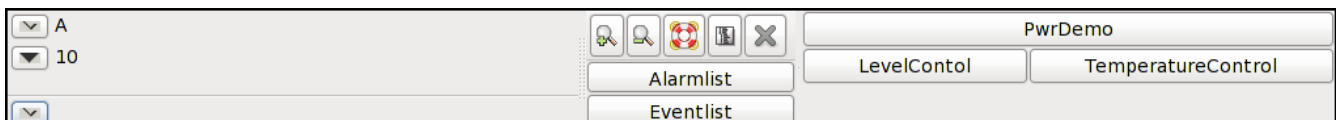
Login as user pwrp and click on on the Pwrdemo icon on the desktop.

The runtime monitor for the demoproject is now started. Start the runtime environment by clicking on the 'Start Runtime' button.



**Fig Runtime monitor**

When the label has switched from 'Down' to 'Running' activate *File/Start Operator Environment* in the menu. The operator window is now opened.



**Fig Operator window**

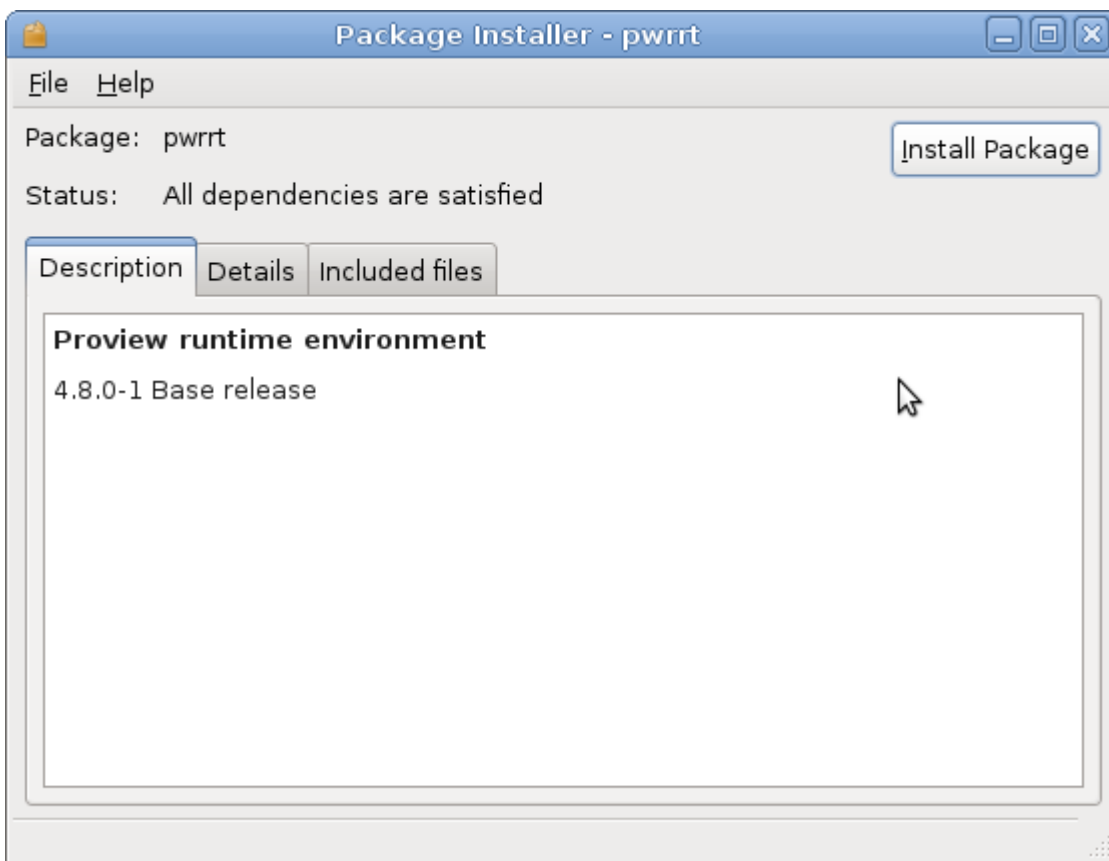
Acknowledge the alarms by clicking on the tick buttons to the left (this will remove the beep). Activate the PwrDemo, LevelControl and TemperatureControl buttons to view the demo project graphs.

## **Package pwrrt**

Dependencies:

libc6 >= 2.11.2-7  
libgtk2.0-0 >= 2.20.1-2  
libasound2 >= 1.0.23-2.1  
libdb4.8 >= 4.8.30-2

Download the pwrrt package and open the Downloads catalog. Rightclick on the pwrrt package and activate GDebi Package Installer in the popup menu.



Press the Install Package button to start the installation.

The runtime package should be installed "stand-alone" without the pwr48-package.

A linux-system with the pwrrt-package is your control-system. Proview will be started automatically at boot-time.

## ***Package pwrsev***

### Dependencies

libc6 >= 2.11.2-7

libgtk2.0-0 >= 2.20.1-2

libasound2 >= 1.0.23-2.1

libdb4.8 >= 4.8.30-2

libmysqlclient16 >= 5.1.49-2

Install mysql-client and mysql-server.

Download the pwrsev package and open the Downloads catalog. Rightclick on the pwrsev package and activate GDebi Package Installer in the popup menu.

Press the Install Package button to start the installation.

The storage environment package should be installed "stand-alone" without the pwr48 or pwr4rt package.