

# Proview Installation Guide Fedora

Release Fedora 11

System Requirements:

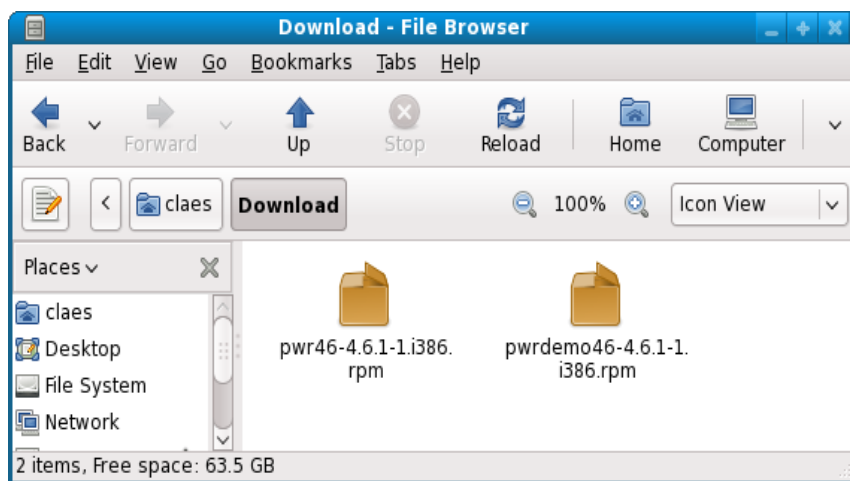
Platform: x86

Kernel >= 2.6.26.5

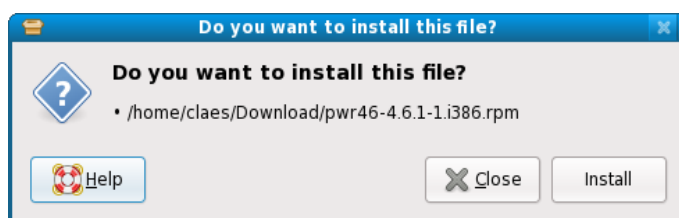
## Package pwr47

Download the the pwr47 package and save to disk The package is downloaded to the Download directory by default. Click on the Home icon on the desktop or start the file browser from the menu(Applications/System Tools/File Browser).

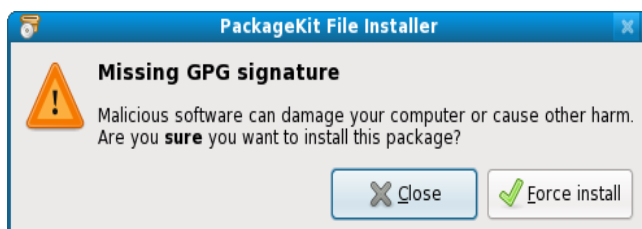
Click on the Download map to view the download package.



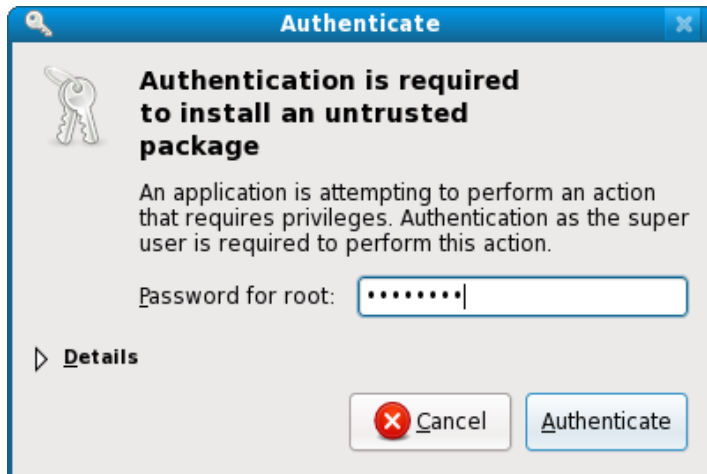
Doubleclick on the pwr47 icon to start the installation.



Click on install



Click on Force install.



Enter the root password and press Authenticate.

The package is now installed.

Login as user pwrp and start the Project Administrator by clicking on the Proview desktop icon.

If you are new to Proview, read the Proview Getting Started Guide available at [www.proview.se](http://www.proview.se)

## **Package pwrdemo**

Download the pwrdemo package. Open a Terminal window and go to the catalog of the downloaded package. Install the package with rpm.

```
> cd Download
```

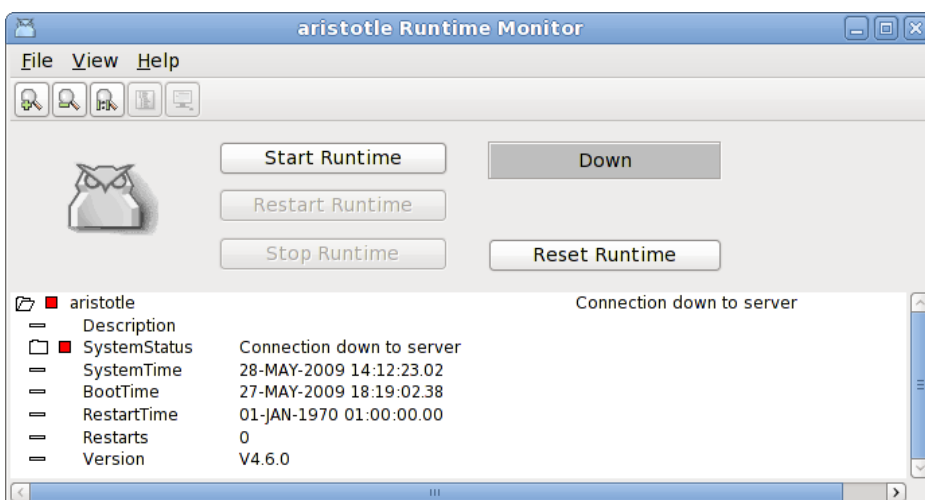
```
> rpm -i pwrdemo47_4.7.x-x.fedora.i386.rpm
```

Replace x.x with the actual version.

Note ! Doubleclicking on the package icon will not install the package correctly.

When the installation is finished, login as user pwrp and click on on the Pwrdemo icon on the desktop.

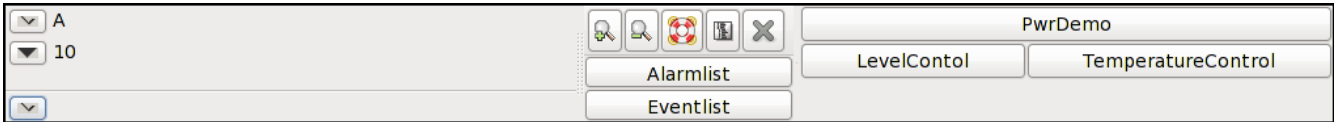
The runtime monitor for the demoproject is now started. Start the runtime environment by clicking on the 'Start Runtime' button.



## **Fig Runtime monitor**

When the label has switched from 'Down' to 'Running' activate *File/Start Operator Environment* in

the menu. The operator window is now opened.



### **Fig Operator window**

Acknowledge the alarms by clicking on the tick buttons to the left (this will remove the beep). Activate the PwrDemo, LevelControl and TemperatureControl buttons to view the demo project graphs.

### **Package pwrvt**

Download the pwrvt package. Open a file browser viewing the Download catalog and doubleclick on the pwrvt packaged icon and repeat the procedure described for for pwr47 above.

The runtime package should be installed "stand-alone" without the pwr47-package.

A linux-system with the pwrvt-package is your control-system. Proview will be started automatically at boot-time.

### **Package pwrsev**

Install mysql and mysql-server.

Download the pwrsev package. Open a file browser viewing the Download catalog and doubleclick on the pwrsev packaged icon and repeat the procedure described for for pwr47 above.

The storage environment package should be installed "stand-alone" without the pwr47 or pwrvt package.